

**Canon**



**EOS**  
***ELAN 7<sub>N</sub>***  
***ELAN 7<sub>NE</sub>***



Photos ©Rick Sammon

**EOS  
ELAN 7<sub>N</sub>**



**EOS  
ELAN 7<sub>NE</sub>**

With an industry leading combination of performance and design, Canon's EOS series of SLR cameras continue to set new standards for digital and film SLRs. Celebrated for their unparalleled performance and sophisticated innovation, Canon EOS cameras have a well-deserved reputation for user-friendly design, professional precision and uncompromising quality. Canon is pleased to add the new EOS ELAN 7<sub>N</sub>/7<sub>NE</sub> to this amazing camera

system. Incorporating a host of new features that Canon owners have asked for, the new ELAN 7<sub>N</sub>/7<sub>NE</sub> includes a new focusing system for the fastest AF performance in its class, a new backlit display, Canon's Whisper Drive technology, and a new distance-based flash metering system, all in a nearly silent, elegant and rugged package. Come explore what's possible with the new EOS ELAN 7<sub>N</sub>/7<sub>NE</sub>.

***INSPIRED, WITH THE FASTEST AF IN ITS CLASS.***



## FAST AF PERFORMANCE

It's never been so easy to achieve perfect focus so quickly. A perfect choice for sports and wildlife photographers, the EOS ELAN 7N/7NE shares much of the AF technology found in Canon's EOS-1v and EOS 3. This high-speed focus can track quickly moving objects with great precision, and allows for up to four photographs to be taken per second. With performance that rivals leading top-of-the-line SLRs available today, the EOS ELAN 7N/7NE easily has the fastest AF in its class in One Shot AF mode. Improvements in AF data calculation and sequencing mean that moving subjects are tracked better than ever in AI Servo AF.

With **AI Servo**, One Shot and AI Focus modes, the AF system can adapt to any situation. AI Servo AF is perfect for moving subjects. The camera follows the subject continuously until the shutter is released, continuously adjusting focus for sharp results, at speeds rivaling many professional SLRs.



The ELAN 7N/7NE's **One-Shot AF** is suited to portrait or still-life photography. Once composition is determined, one of the camera's seven focusing sensors quickly focuses on the subject. Unlike cameras with fewer focusing points, the ELAN 7N/7NE allows off-center subjects to be in sharp focus without the need to recompose the image.



**AI Focus** offers control in any situation. In AI Focus, the ELAN 7N/7NE detects if there is subject movement. Then, it automatically selects AI Servo Focus or One-Shot AF as the shooting situation requires.



# CATCH IT!





125 5.6 -2.1 1.2+

### 7-POINT AF

The EOS ELAN 7N/7NE's **7-point Wide-Area Autofocus** provides a new level of speed and accuracy in AF. Seven focusing points are arranged in a cross pattern with a central "cross-type" sensor. This wide area makes it possible for sharp focus to be achieved instantly – even when the subject is off-center – without the need to recompose the shot. Vertically or horizontally, with stationary or moving objects, in low light and even with low contrast, 7-point Wide-Area Autofocus delivers razor-sharp images.

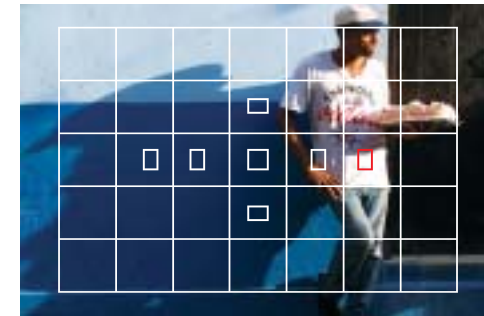
The ELAN 7N/7NE's **Focusing Point Selection Keys** represent a bold innovation in speed and versatility. Designed for easy and fast action, these keys enable the photographer to immediately select any one of the seven focusing points simply by pressing a button. It's simple, intuitive and remarkably fast. The viewfinder has a **Built-in Dioptic Adjustment** from -2.5 to +0.5. Adjustments can be made conveniently without removing the camera's attached eyecup.

A **Depth-of-Field Preview Button** enables a fast check of the "sharp zone" before the shutter is released.



### SUPERIOR METERING

The ELAN 7N/7NE uses Canon's advanced **35-zone Evaluative Metering** for fast, accurate control of shooting environments that combine light and shadow or strong backlight. Precise metering is assured whether shooting in vertical or horizontal positions.



**Partial Metering** measures 10% of the viewfinder at the center or around the chosen focusing point to provide pinpoint accuracy when metering shadows, highlights or subjects against very bright or dark backgrounds.



The ELAN 7N/7NE measures the entire scene with **Center-Weighted Average Metering** while placing greater emphasis on what appears in the center of the frame. It is often the chosen method of experienced photographers.



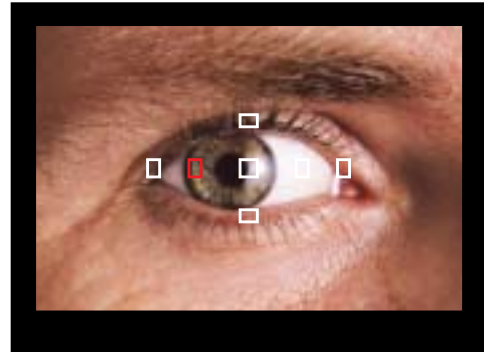
# LOCK IT!



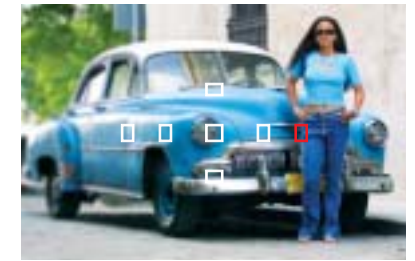
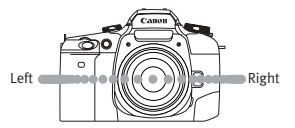


### EYE CONTROL

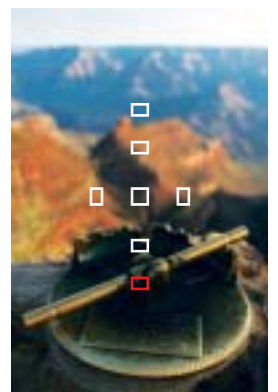
Use the EOS ELAN 7NE's exclusive **Eye Controlled Focus** for instant, intuitive AF in almost any situation. Designed by Canon to link eye movement with the



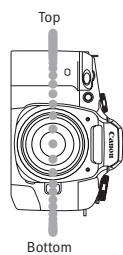
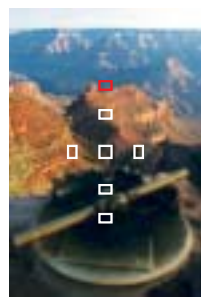
seven AF points, the Eye Control focus system tracks the glance of the eye, integrating composition and focus into one uninterrupted step. Canon's fastest Eye Control system to date, it works whether the camera is oriented horizontally or vertically. This high-speed, advanced Eye Control system distinguishes the ELAN 7NE from every other camera in its class.



Horizontal Position



Vertical Position



# SEE IT!

## Command Dial Image Zone



### Full Auto

The camera chooses all settings, including flash, for totally automatic, point-and-shoot simplicity.



### Portrait

The camera uses a large aperture, achieving sharp focus on the subject while blurring other distracting details.

## Creative Zone



### Intelligent Program AE

In this fully automatic mode, the camera chooses both shutter speed and aperture.



### TV Shutter-Priority AE

The camera chooses the correct aperture to correspond with user-chosen shutter speed.



*Small Aperture*



*Large Aperture*

### AV Aperture-Priority AE

The user specifies the aperture size, and the camera chooses the appropriate shutter speed.



### DEP Depth-of-Field AE

The user picks the closest and furthest subjects in a scene that they want in sharp focus.



### M Manual

The photographer specifies both shutter speed and aperture manually, for complete creative control.



### Landscape

The camera chooses a small aperture to achieve a broad depth-of-field in the entire composition.



### Close-Up

The camera isolates small details with a narrow zone of sharp focus.



### Sports

The camera uses the fastest possible shutter speed to freeze the action in front of the camera.



### Night Scene

The camera fires the flash, and then leaves the shutter open to capture the glow of the background.

## COMMAND DIAL

Use the EOS ELAN 7N/7NE's **Command Dial** to set the camera to any kind of photographic situation. For beginners, or seasoned photographers confident that the camera will make the right choices for them, choose one of the fully automatic functions in the **Image Zone**. For more user-controlled features, including fully manual operation, click the Command Dial over to the **Creative Zone** (P, Tv, Av, M and DEP).

## ENHANCED FUNCTIONS

In addition to its sophisticated focus and exposure capabilities, the ELAN 7N/7NE features a host of other functions to enhance the photographic experience. Features like **AE Lock** make it possible to lock focus on a specific element of the composition, and then to recompose the shot without losing focus.



AEB



+1/2



±0

-1/2

**AEB (Auto Exposure Bracketing)** allows the photographer to select the degree of under or over-exposure in the bracketing sequence—from ½ to 2 full stops in ½ stop increments. The camera then automatically fires three shots, ensuring correct exposure in complex lighting situations.

**Multiple Exposure Control (ME)** helps creativity flow by recording up to nine images on a single frame of film.



The **Self-timer** delays the shutter for ten seconds to allow the photographer to enter the composition, or to minimize shake for slow exposures.

Canon's **Whisper Drive** quiet film transport technology minimizes film-advance noise, even when shooting in continuous mode, making the ELAN 7N/7NE the quietest EOS on the market!



# EXPRESS IT!





### **BUILT-IN FLASH**

The EOS ELAN 7N/7NE has a **Built-in Flash** that pops up and fires automatically in Full-Auto, Portrait, Night Scene and Close-up modes.

Automatic exposure controls set aperture, shutter speed and flash intensity. With range to cover as wide as a 28mm lens, the flash has a Guide Number rating of 42.6 (ft., ISO 100). Recycling time is just 2 seconds.

A **Red-Eye Reduction Lamp** fires before the flash for more natural looking portraits.

### **E-TTL II**

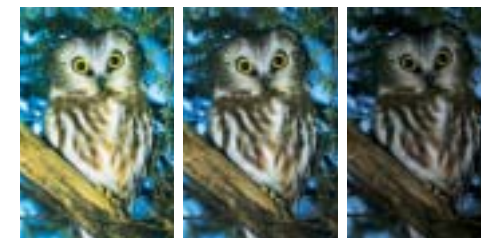
Attach any optional **EX-series Speedlite** to the EOS ELAN 7N/7NE, and open up a host of powerful features and creative possibilities. A new distance-based E-TTL II flash-metering system\* means greater flash accuracy than ever before in a 35mm EOS SLR, especially if shooting unusually light or dark subjects or if you have a highly reflective object in the background. It's also effective for shooters who like to lock focus and then re-compose their pictures. E-TTL II remains the only flash system among 35mm SLRs that uses the same sensor to measure both ambient exposure as well as flash, so it's ideal for balancing the two for natural fill-



flash results. And both the ELAN 7N and 7NE provide entirely separate adjustment of ambient exposure or flash exposure, for the utmost in creative control.

\*Refer to page 17 for compatible lenses providing distance information to the camera.

**FEB (Flash Exposure Bracketing)** is particularly useful when perfect exposure is critical. With a 550EX, Macro Twin Lite MT-24EX or Macro Ring Lite MR-14EX attached to the ELAN 7N/7NE, FEB shoots three shots in a row – the first at proper exposure, the next underexposed, the last overexposed – in 1/2 stop increments from 1/2 to 2 full stops, assuring the correct amount of flash will be recorded.



Overexposure

Correct exposure

Underexposure

**FP Flash (High-speed Sync)** is perfect for freezing motion like drops of a waterfall, for shooting with shallow depth-of-field or for eliminating ambient light to isolate subjects. In this mode, the EX-series

Speedlites provide Full Range Shooting at high shutter speeds up to 1/4000 sec!

**FE Lock (Flash Exposure Lock)** offers a simple method of combining 10% partial metering of flash illumination – something no other SLR in its class can do. Once an EX-series Speedlite is attached, the AE Lock button functions as an FE Lock. Pushing the AE Lock button stores the proper flash exposure data in the camera's memory, the composition can then be fine-tuned and shot without re-metering the scene.



# **ILLUMINATE IT!**

## CUSTOM FUNCTION

The EOS ELAN 7N/7NE has 13 different **Custom Functions**, usable in 34 different settings that enable the user to adapt the camera to their style of photography.

Custom Function No.	Function Description	Setting	Final Outcome
C.Fn-1	Film rewind speed	0	Silent
		1	High speed
C.Fn-2	Film leader position after film rewind	0	Rewinds film leader into the cartridge
		1	Leaves film leader outside the cartridge
C.Fn-3	DX-coded film speed setting method	0	Enabled
		1	Disabled
C.Fn-4	(O) Shutter button and (●) AE Lock button functions	0	(O): AF and AE start, (●): AE Lock
		1	(O): AE Lock, (●): AF and AE start
		2	(O): AF and AE start, (●): AF stop
C.Fn-5	Mirror lockup (30-second duration)	0	Disabled (Normal operation)
		1	Enabled
C.Fn-6	Shutter curtain synchronization (with external Speedlite)	0	1st-curtain sync (Normal operation)
		1	2nd-curtain sync (with built-in flash also)
C.Fn-7	AF-assist light emission/ Main flash firing	0	Built-in/external flash: AF-assist active/Fires main flash
		1	Built-in/external flash: No AF-assist/Fires main flash
		2	Built-in flash: No AF-assist, External flash: AF-assist emitted Built-in/external flash: Fires main flash
C.Fn-8	Partial metering and FE Lock linkage with focusing point	0	Built-in/external flash: Emits AF-assist/No main flash
		1	Disabled (Partial metering and FE Lock at center focusing point)
C.Fn-9	Flash sync speed in aperture-priority AE mode	0	Set automatically to match ambient light
		1	Set to 1/125 sec.
C.Fn-10	In-focus focusing point flashing	0	Enabled (AF point lights up red)
		1	Disabled
C.Fn-11	Focusing point selection method	0	Focusing point selector and keys
		1	Directly with keys
		2	Focusing point selector and electronic dials
C.Fn-12	Start focusing point selection from center focusing point with focusing point selector	0	Disabled
		1	Enabled (Starts from center focusing point)
C.Fn-13	Lens AF stop button function (on selected IS Telephoto lenses only)	0	AF stops
		1	AF starts
		2	AE Lock during metering
		3	Focusing point selection mode (auto/manual)
		4	AF mode switching (between One-Shot AF and AI Servo AF)
5	Starts Image Stabilizer		

## EOS SYSTEM

The EOS ELAN 7N/7NE camera is a perfect entry into the **EOS system**, the most comprehensive digital and analog SLR system available today. Only EOS owners have access to over 50 EF lenses, Canon's superlative Speedlites and other accessories. Uncompromised quality, performance and compatibility in both analog and digital distinguishes the EOS System from all others.



EOS Digital Rebel

EOS 10D Digital

## ACCESSORIES

To add more power to the ELAN 7N/7NE, choose one of Canon's **EX-series Speedlites**. The powerful **Speedlite 550EX**, with a max guide number of 180 (ft., ISO 100), or the compact **420EX**, with its guide number of up to 138 (ft., ISO 100), adds full E-TTL flash metering, rotating, zooming heads and much more.



For dazzling close-ups, the **Macro Ring Lite MR-14EX** offers a full range of advanced flash features including E-TTL Wireless Autoflash control of off-camera slave units.



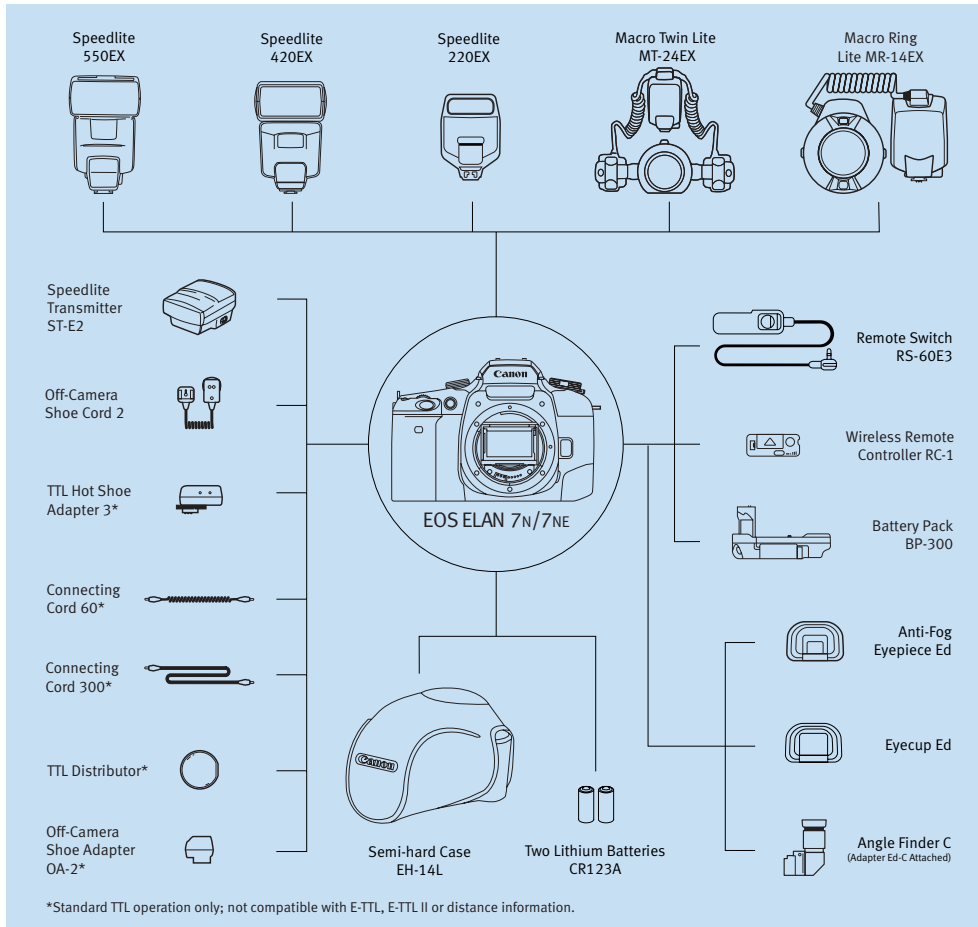
The **Battery Pack BP-300** works perfectly with the ELAN 7N/7NE. It has a comfortable Vertical Grip with controls including Shutter Release and AE Lock. Compact and lightweight, it accepts four "AA" batteries or two CR123A lithium batteries.



In cold or humid weather the **Anti-Fog Eyepiece Ed** accessory attaches easily to reduce condensation and help you maintain a clear view of your subject.



The **Remote Switch RS-60E3** releases the shutter by cable from distances of up to 2 ft. The **Remote Controller RC-1** fires the shutter via a miniature infrared transmitter from up to 16.4 ft. away.



# ACCESSORIES

## EF LENSES

The choice of professionals and hobbyists worldwide, Canon **EF Lenses** are masterpieces of innovative design and superior optics. Canon's advanced research and engineering places EF Lenses in a class by themselves. Canon's **Ultrasonic Motor Technology (USM)** offers instant focus, with nearly-silent operation. Canon's **Image Stabilizer (IS)** lenses eliminate camera shake, enabling photographers to shoot at slower speeds, often without a tripod in situations where one might have been warranted. Unsurpassed in value and quality, there are more than 50 EF Lenses compatible with the EOS ELAN 7N/NE. The **EF 28-105mm f/4-5.6** and **EF 28-90mm f/4.5-5.6 II** lenses are perfect companions for the EOS ELAN 7N/7NE. Their lightweight, high-quality designs were specially created to take full advantage of the camera's unique features. Both lenses offer virtually silent operation, enabling you to shoot in environments where silence is essential.

Left: EF 28-105mm f/4-5.6  
Right: EF 28-90mm f/4.5-5.6 II

# EF LENS



100mm Macro



20mm



28mm



50mm



300mm



Canon EF Lens	Lens Construction (elements/groups)	Closest Focusing Distance (m/ft)	Maximum Magnification (x)	Filter Diameter (mm)	Max. Diameter x Length (mm/in)	Weight (g/oz)	Lens Hood
● EF 16-35mm f/2.8L USM	14 / 10	0.28 / 0.9	0.22	77	83.5 / 3.3 x 103 / 4.1	600 / 1.3 lb.	EW-83E
● EF 17-40mm f/4L USM	12 / 9	0.28 / 0.92	0.24 (at 40mm)	77	83.5 / 3.3 x 96.8 / 3.8	500 / 1.1 lb.	EW-83E
● EF 20-35mm f/3.5-4.5 USM	12 / 11	0.34 / 1.1	0.13 (at 35mm)	77	83.5 / 3.3 x 68.9 / 2.7	340 / 12.0	EW-83II
● EF-S 18-55mm f/3.5-5.6 I	11 / 9	0.28 / 0.92	0.28 (at 55mm)	58	69 / 2.7 x 66.2 / 2.6	190 / 6.7	EW-60C
● EF 24-70mm f/2.8L USM	16 / 13	0.38 / 1.25	0.29 (at 70mm)	77	83.2 / 3.3 x 123.5 / 4.9	950 / 2.1	EW-83F
● EF 24-85mm f/3.5-4.5 USM	15 / 12	0.5 / 1.6	0.16 (at 85mm)	67	73.0 / 2.9 x 69.5 / 2.7	380 / 13.4	EW-73II
EF 28-80mm f/3.5-5.6 II	10 / 10	0.38 / 1.25	0.26 (at 80mm)	58	67 / 2.6 x 71 / 2.8	200 / 7.8	EW-60C
EF 28-90mm f/4-5.6 II USM	10 / 8	0.38 / 1.3	0.30 (at 90mm)	58	67 / 2.6 x 71 / 2.8	190 / 6.7	EW-60C
EF 28-90mm f/4-5.6 II	10 / 8	0.38 / 1.3	0.30 (at 90mm)	58	67 / 2.6 x 71 / 2.8	190 / 6.7	EW-60C
● EF 28-105mm f/3.5-4.5 II USM	15 / 12	0.5 / 1.64	0.19 (at 105mm)	58	72.0 / 2.8 x 75.0 / 3.0	375 / 13.1	EW-63II
● EF 28-105mm f/4-5.6 USM	10 / 9	0.48 / 1.57	0.19 (at 105mm)	58	67 / 2.6 x 68 / 2.7	210 / 7.4	EW-63B
● EF 28-135mm f/3.5-5.6 IS USM	16 / 12	0.5 / 1.64	0.19 (at 135mm)	72	78.4 / 3.1 x 96.8 / 3.8	540 / 18.9	EW-78BII
● EF 28-200mm f/3.5-5.6 USM	16 / 12	0.45 / 1.5	0.28 (at 200mm)	72	78.4 / 3.1 x 89.6 / 3.5	500 / 17.6	EW-78D
● EF 28-300mm f/3.5-5.6L IS USM	22 / 16	0.7 / 1.5	0.3 (at 300mm)	77	92 / 3.6 x 184 / 7.2	1670 / 3.7 lb.	EW-83G
EF 35-80mm f/4-5.6 III	8 / 8	0.4 / 1.3	0.23 (at 80mm)	52	65.0 / 2.6 x 63.5 / 2.5	175 / 6.2	EW-54II
EF 55-200mm f/4.5-5.6 II USM	13 / 13	1.4 / 2.3	0.17	77	86.2 / 3.4 x 197 / 7.8	1,470 / 3.24 lb.	ET-86
● EF 70-200mm f/2.8L USM	23 / 18	1.5 / 4.9	0.16 (at 200mm)	77	84.6 / 3.3 x 193.6 / 7.6	1,310 / 2.9 lb.	ET-83II
● EF 70-200mm f/2.8 IS USM	18 / 15	1.2 / 3.9	0.21 (at 200mm)	67	76 / 3.0 x 172 / 6.8	705 / 25	ET-74
● EF 70-200mm f/4L USM	16 / 13	1.5 / 4.9	0.26 (at 300mm)	58	78.5 / 3.1 x 137.2 / 5.4	650 / 1.4 lb.	ET-64II
● EF 70-300 f/4.5-5.6 DO IS USM	18 / 12	1.4 / 4.6	0.19 (at 300mm)	58	82.4 / 3.2 x 99.9 / 3.9	720 / 25.4	ET-65B
EF 75-300mm f/4-5.6 IS USM	15 / 10	1.5 / 4.9	0.26 (at 300mm)	58	78.5 / 3.1 x 137.2 / 5.4	650 / 1.4 lb.	ET-64II
EF 75-300mm f/4-5.6 III USM	13 / 9	1.5 / 4.9	0.25 (at 300mm)	58	71.0 / 2.8 x 122 / 4.8	480 / 16.8	ET-60
EF 75-300mm f/4-5.6 III	13 / 9	1.5 / 4.9	0.25 (at 300mm)	58	71.0 / 2.8 x 122 / 4.8	480 / 16.8	ET-60
EF 80-200mm f/4.5-5.6 II	10 / 7	1.5 / 4.9	0.16 (at 200mm)	52	69.0 / 2.7 x 78.5 / 3.1	250 / 8.8	ET-54
● EF 100-300mm f/4.5-5.6 USM	13 / 10	1.5 / 4.9	0.20 (at 300mm)	58	73.0 / 2.9 x 121.5 / 4.8	540 / 1.2 lb.	ET-65III
● EF 100-400mm f/4.5-5.6L IS USM	17 / 14	1.8 / 5.9	0.20 (at 400mm)	77	92.0 / 3.6 x 189.0 / 7.4	1,380 / 3.0 lb.	ET-83C
● EF 14mm f/2.8L USM	14 / 10	0.25 / 0.8	0.10	77	77.0 / 3.0 x 89.0 / 3.5	560 / 11.6	Built-in
● EF 15mm f/2.8 Fisheye	8 / 7	0.2 / 0.7	0.14	72	73.0 / 2.9 x 62.2 / 2.4	330 / 11.6	Built-in
● EF 20mm f/2.8 USM	11 / 9	0.25 / 0.8	0.14	72	77.5 / 3.1 x 70.6 / 2.8	405 / 14.3	EW-75II
● EF 24mm f/1.4L USM	11 / 9	0.25 / 0.82	0.16	77	83.5 / 3.3 x 77.4 / 3.0	550 / 19.4	EW-83DII
● EF 24mm f/2.8	10 / 10	0.25 / 0.8	0.16	58	67.5 / 2.7 x 48.5 / 1.9	270 / 9.5	EW-60II
● EF 28mm f/1.8 USM	10 / 9	0.25 / 0.8	0.18	58	73.6 / 2.9 x 55.6 / 2.2	310 / 10.9	EW-63II
EF 28mm f/2.8	5 / 5	0.3 / 1	0.13	52	67.4 / 2.7 x 42.5 / 1.7	185 / 6.5	EW-65II
● EF 35mm f/1.4L USM	11 / 9	0.3 / 0.98	0.18	72	79.0 / 3.1 x 86.0 / 3.4	580 / 20.5	EW-78C
EF 35mm f/2	7 / 5	0.25 / 0.8	0.23	52	67.4 / 2.7 x 42.5 / 1.7	210 / 7.4	EW-65II
EF 50mm f/1.4 USM	7 / 6	0.45 / 1.5	0.15	58	73.8 / 2.9 x 50.5 / 2.0	290 / 10.2	ES-71II
EF 50mm f/1.8 II	6 / 5	0.45 / 1.5	0.15	52	68.2 / 2.7 x 41.0 / 1.6	130 / 4.6	ES-62
EF 85mm f/1.2L USM	8 / 7	0.95 / 3.1	0.11	72	91.5 / 3.6 x 84.0 / 3.3	1,025 / 2.3 lb.	ES-79II
● EF 85mm f/1.8 USM	9 / 7	0.85 / 2.8	0.13	58	75.0 / 3.0 x 71.5 / 2.8	425 / 15.0	ET-65III
● EF 100mm f/2 USM	8 / 6	0.9 / 3	0.14	58	75.0 / 3.0 x 73.5 / 2.9	460 / 1.0 lb.	ET-65III
● EF 135mm f/2L USM	10 / 8	0.9 / 3	0.19	72	82.5 / 3.2 x 112.0 / 4.4	750 / 1.7 lb.	ET-78II
EF 135mm f/2.8 with Softfocus	7 / 6	1.3 / 4.3	0.12	52	69.2 / 2.7 x 98.4 / 3.9	390 / 13.8	ET-65III
● EF 200mm f/2.8L II USM	9 / 7	1.5 / 4.9	0.16	72	83.2 / 3.3 x 136.2 / 5.4	765 / 1.7 lb.	ET-83BII
● EF 300mm f/4L IS USM	17 / 13	2.5 / 8.2	0.13	52 Drop-in	128.0 / 5.0 x 252.0 / 9.9	2,550 / 5.6 lb. (lens only)	ET-120
● EF 300mm f/4L IS USM	15 / 11	1.5 / 4.9	0.24	77	90.0 / 3.5 x 221.0 / 8.7	1,190 / 2.6 lb.	Built-in
● EF 400mm f/2.8L IS USM	17 / 13	3 / 9.8	0.15	52 Drop-in	163.0 / 6.4 x 349.0 / 13.7	5,370 / 11.8 lb.	ET-155
● EF 400mm f/4.0L DO IS USM	17 / 13	3.5 / 11.48	0.12	52 Drop-in	128.0 / 5.0 x 232.7 / 9.4	1,940 / 4.3 lb.	ET-120
● EF 400mm f/5.6L USM	7 / 6	3.5 / 11.5	0.12	77	90.0 / 3.5 x 256.5 / 10.1	1,250 / 2.8 lb.	Built-in
● EF 500mm f/4L IS USM	17 / 13	4.5 / 14.8	0.12	52 Drop-in	146.0 / 5.8 x 387.0 / 15.2	3,870 / 8.5 lb.	ET-138
● EF 600mm f/4L IS USM	17 / 13	5.5 / 18	0.12	52 Drop-in	168.0 / 6.6 x 456.0 / 18.0	5,360 / 11.8 lb.	ET-160
● EF 1200mm f/5.6L USM ▼	13 / 10	14 / 45.9	0.09	48 Drop-in	228.0 / 9.0 x 836.0 / 32.9	16,500 / 36.4 lb.	Built-in
EF 50mm f/2.5 Compact Macro	9 / 8	0.23 / 0.8	0.50	52	67.6 / 2.7 x 63.0 / 2.5	280 / 9.9	—
Life-Size Converter EF***a	4 / 3	0.24 / 0.8	1.00	—	67.6 / 2.7 x 34.9 / 1.4	160 / 5.6	—
● MP-E65mm f/2.8 1-5x Macro Photo	10 / 8	0.24 / 0.8	5.00	58	81.0 / 3.2 x 98.0 / 3.9	730 / 25.8 (lens only)	—
● EF 100mm f/2.8 Macro USM	12 / 8	0.31 / 1	1.00	58	79.0 / 3.1 x 119.0 / 4.7	600 / 21.1	ET-67
● EF 180mm f/3.5L Macro USM	14 / 12	0.48 / 1.6	1.00	72	82.5 / 3.2 x 186.6 / 7.3	1,090 / 2.4 lb.	ET-78II
TS-E 24mm f/3.5L*	11 / 9	0.3 / 1	0.14	72	78.0 / 3.1 x 86.7 / 3.4	570 / 1.3 lb.	EW-75BII
TS-E 45mm f/2.8*	10 / 9	0.4 / 1.3	0.16	72	81.0 / 3.2 x 90.1 / 3.5	645 / 1.4 lb.	EW-79BII
TS-E 90mm f/2.8**	6 / 5	0.5 / 1.6	0.29	58	73.6 / 2.9 x 88.0 / 3.5	565 / 1.2 lb.	ES-65III
Extender EF 1.4x II**	5 / 4	— / —	—	—	71.8 / 2.9 x 27.2 / 1.1	220 / 7.8	—
Extender EF 2x II**	7 / 5	— / —	—	—	71.8 / 2.8 x 57.9 / 2.3	265 / 9.3	—
Extension Tube EF 12 II	*6	— / —	—	—	66.5 / 2.6 x 12.3 / 0.5	66 / 2.3	—
Extension Tube EF 25 II	*7	— / —	—	—	66.5 / 2.6 x 27.3 / 1.1	95 / 3.4	—

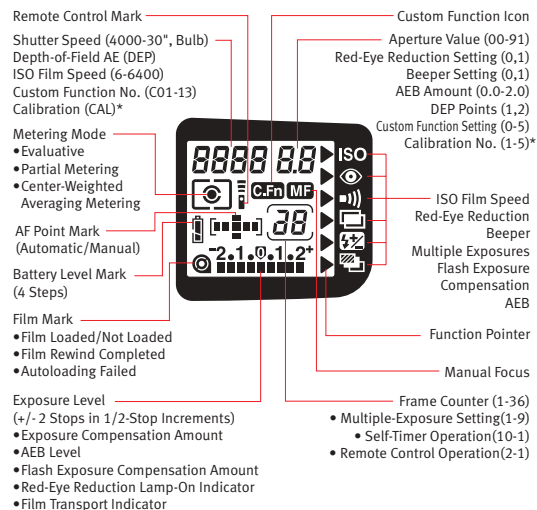
IS = Image Stabilizer  
DO = Diffractive Optics  
USM = Ultrasonic Motor  
AFD = Arc Form Drive  
L = L-Series Professional Lens  
# = With Hood Adapter 62  
▼ Special order item  
\* TS-E and MP-E lenses are manual focus only, with automatic diaphragm.  
\*\* Extenders EF 1.4x and EF 2x are for exclusive use with EF 70-200mm f/2.8L, EF 70-200mm f/4L, 100-400mm f/4.5-5.6L, 135mm f/2L, 180mm f/3.5L Macro, 200mm f/2.8L, 300mm f/2.8L IS, 300mm f/4L, 300mm f/4L IS, 400mm f/2.8L IS, 400mm f/5.6L, 500mm f/4L IS, 600mm f/4L IS, and 1200mm f/5.6L. (Manual focus only when EF 1.4x is used with EF 100-400mm f/5.6L, 400mm f/5.6L, 500mm f/4.5L, 1200mm f/5.6L, and with 180mm f/3.5L Macro when focused closer than 2.6 feet; or with Extender EF 2x when used with EF 70-200mm f/4L, 180mm f/3.5L Macro, 300mm f/4L IS, 300mm f/4L, 400mm f/5.6L, 500mm f/4L, 600mm f/4L, and 1200mm f/5.6L.)  
\*\*\* Life Size Converter EF is for exclusive use with EF 50mm f/2.5 Compact Macro.  
† Available only with the EOS Digital Rebel kit. Exclusively designed for EOS Digital Rebel. Cannot be mounted on any other EOS cameras.  
● Incorporates distance information with E-TTL II.

Subject to change without notice.

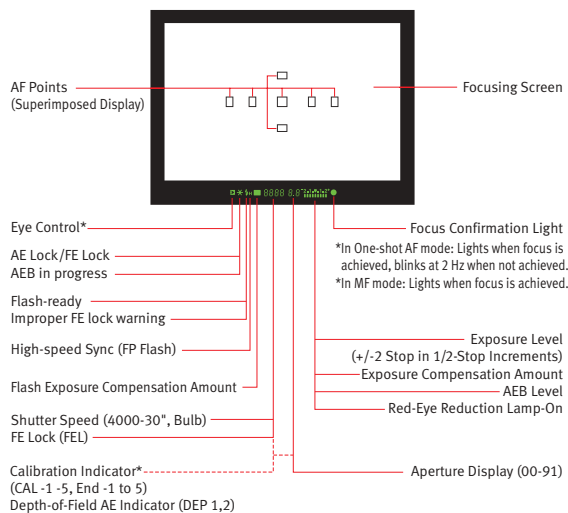
## NOMENCLATURE



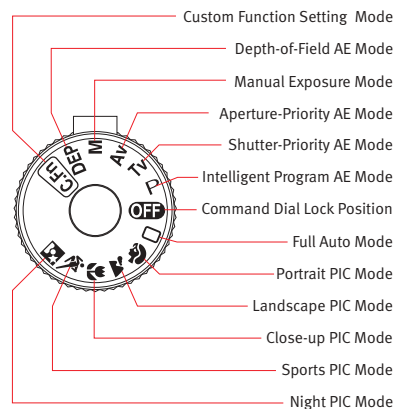
## LCD PANEL INFORMATION



## VIEWFINDER INFORMATION



## COMMAND DIAL



\*ELAN 7NE model only

## SPECIFICATIONS

### TYPE AND MAJOR COMPONENTS

**Type:** 35mm vertical-travel focal plane shutter SLR (Single-Lens-Reflex) camera with multi-point autofocus (Eye Controlled Focus™ in ELAN 7NE), auto exposure with built-in flash.

**Lens Mount:** Canon EF Mount (electronic signal transfer system).

**Usable Lenses:** Canon EF Lenses (except EF-S lenses).

**Viewfinder, ELAN 7N:** Fixed eye-level pentaprism with approximately 90% vertical and 92% horizontal coverage of actual picture area and 0.70x magnification with 50mm lens at infinity.

**Viewfinder, ELAN 7NE:** Same as ELAN 7N. Center and six outside focusing points controlled by eye movement.

**Mirror:** Quick-return half mirror (60% reflection/40% transmission).

**Focusing Screen:** Fixed new Laser-matte screen with 7 focusing points.

**Dioptric Adjustment:** Standard diopter of -1, user-adjustable from -2.5 to +0.5.

**Eye Relief:** 19.5mm

**Shutter:** Vertical-travel, focal-plane shutter with all speeds electronically controlled. First and second curtains both have dedicated electromagnetic release control.

**Shutter Speeds:** 1/4000 to 30 sec. (in 1/2-stop increments), plus bulb.

**Maximum X-sync Speed:** 1/125 sec.

**Viewfinder Information, Inside Image Area:** Focusing points with superimposed display.

**Viewfinder Information, Below Image Area:** (from left to right) Eye Controlled Focus indicator (ELAN 7NE only); AE Lock/FE Lock symbol; flash ready signal; High-speed Sync in use signal; flash exposure compensation indicator; shutter speed and aperture indicating LEDs (blinks at 2Hz when setting is unsuitable), also present DEP 1/DEP 2 information, calibration (Cal 1 to 5, END -1 to 3); exposure compensation scale/manual metering scale, Red-Eye Reduction lamp on/reduction progress indicator; in-focus indicator (blinks at 2Hz when focus cannot be achieved).

### AUTOFOCUS

**AF Control System:** TTL-CT-SIR (Through-the-Lens Cross-Type Secondary Image Registration) with CMOS sensor.

**Focusing Point Selection:** Selected automatically by camera or manually by user. Focusing point selection via Eye Controlled Focus™ available in ELAN 7NE only.

**Focus Modes:** (1) One-Shot AF; (2) Predictive AF with AI Servo AF; (3) AI Focus AF; (4) Manual.

**Focus Operation:** (1) AF activated by pressing the shutter button halfway; (2) Pressing AE Lock button.

**AF Focus Indicator:** Icon in viewfinder (LCD), superimposed (SI) focusing point display, and beeper.

**AF Working Range:** EV 1-18 (at ISO 100 with the standard chart).

**AF-Assist Method:** Intermittent bursts fired by built-in flash (no patterned beam).

### EXPOSURE CONTROL

**Light Metering:** TTL max. aperture with a 35-zone silicon photocell. Three metering modes available: (1) Evaluative, (2) 10% partial metering linkable to the focus point by Custom Function control, (3) Center-weighted average metering.

**Metering Range:** EV 1-20 (ISO 100).

**Flash Metering:** 35-zone E-TTL II autofocus system incorporating lens focusing distance with compatible EF Lenses, linked to AF point (with optional EX-series Speedlites). 3-zone TTL Flash metering linked to focus point (with built-in flash, and all other EOS Speedlites).

**Exposure Modes:** (1) Intelligent Program AE with variable shift; (2) Shutter speed Priority AE; (3) Aperture-Priority AE; (4) Depth-of-Field AE (DEP); (5) Full Auto; (6) Programmed Image Control: Portrait, Landscape, Close-up, Sports and Night Scene; (7) Manual; (8) E-TTLII Program Flash; (9) A-TTL Program Flash; (10) TTL Program Flash.

**Exposure Compensation:** (1) Auto Exposure Bracketing (AEB) to +/- 2 stops in 1/2-stop increments, repeatable. May be used in Intelligent Program, Shutter-Priority, Aperture-Priority, Depth-of-Field, and Manual modes only. (2) User-set exposure compensation up to +/- 2 stops, in 1/2-stop increments, with Quick Control Dial. (3) Flash Exposure.

**Multiple Exposure:** Up to nine exposures can be preset. Automatically clears upon completion.

**Film Transport**

**Film Speed Setting:** ISO 25-5000 automatically set in 1/3-stop increments according to DX code. Can also be set manually from ISO 6-6400 in 1/3-stop increments. High-speed infrared film cannot be used.

**Film Loading:** Automatic take-up with a sprocketless system. Film is automatically advanced to the first frame when the camera back is closed.

**Film Transport:** Choice of single frame or continuous shooting at approximately 4 fps (3.5 fps in AI Servo AF), with additive frame counter.

**Film Rewind:** Film is automatically rewound at the end of the roll or after 36 exposures, with a mid-roll film rewind option. Choice of high-speed (five seconds with 24 exposure roll) or silent rewind (13 seconds with 24 exposure roll) modes.

### BUILT-IN FLASH

**Type:** Built-in, retractable TTL automatic flash; pop-up automatically when needed in low light/backlighting situations except when in Landscape, Sports or Creative Zone modes; manual activation (pull up by hand) in P, Av, Tv, M modes.

**Flash AE Controls:** TTL automatic flash control by metering light reflected off film plane. In Programmed AE modes, flash aperture is

set according to TTL program. In Aperture-Priority AE and Manual modes, user sets flash AE aperture. In Shutter-Priority AE, aperture is set to match shutter speed selected (1/125 sec. or slower).

**Guide Number:** 43 (ISO 100, ft.)

**Distance Range (ISO 100 negative film, at f/3.5):** 3-17 ft (1-5.2m).

**Flash Coverage Angle:** Covers 28mm lenses.

**Flash Duration:** 1.0 ms or less.

**Recycling Time:** Approximately two seconds.

**Color Temperature:** Equivalent to daylight.

### POWER SOURCE

**Battery:** Two CR123A lithium batteries (6V) loaded through the camera grip bottom.

**Battery Check:** Automatic battery check when the Command Dial is released from OFF.

### Shooting Capacity, 24 Exposure Rolls:

Temperature	No Flash Used	50% With Flash	100% With Flash
Normal Temperature (68°F/20°)	115/(125)	33/(38)	17/(19)
Low Temperature (-4°F/-20°)	65/(70)	19/(20)	9/(10)

Eye Control OFF shown in parenthesis.

**Optional Battery Pack BP-300:** Compatible with four AA batteries or two CR123A lithium batteries.

### OTHER

**Custom Functions:** Thirteen available.

**Eyepiece Shutter:** None.

**EL Backlighting of LCD Panel:** Yes.

**Remote Control:** Built-in sensor for use with optional wireless Remote Controller RC-1. Remote control terminal for optional 2-foot RS-60E3 Remote Control Cord.

**Data Display:** In viewfinder and in LCD panel.

**Camera Back:** Non-interchangeable.

**Cosmetics:** Highly refined body with black alumite top and front covers.

**Self-Timer:** When selected, ten-second delay and flashing red LED on camera front.

**External Flash:** Speedlite 420EX is recommended with this camera to employ E-TTL II flash exposure system as well as High-speed Sync to 1/4000 sec. & FE Lock. The camera is compatible with all EX, EZ and E-series Canon Speedlites designed for EOS system cameras.

### DIMENSIONS

**Size:** ELAN 7N/7NE: 5.78 (W) x 4.06 (H) x 2.72 (D) in./

146.7 (W) x 103 (H) x 69 (D) mm

**Weight:** ELAN 7N/7NE: 20.5 oz./580g.

(Add 1.12oz./32g for two CR123A batteries)

# **Canon** KNOW HOW®

1-800-OK-CANON  
[www.usa.canon.com](http://www.usa.canon.com)

Canon U.S.A., Inc.  
One Canon Plaza, Lake Success, NY 11042 U.S.A.

Canon Canada Inc.  
6390 Dixie Road, Mississauga, Ontario L5T 1P7 Canada

Canon Mexicana, S. DE R.L. DE C.V.  
Blvd. M. A. Camacho No. 138, Piso 16 Y 17, Col. Lomas De Chapultepec,  
C.P. 11000 México, D.F. Mexico

[www.canoneos.com](http://www.canoneos.com)